

**CHURCH STAFF**

Senior Pastor ..... Rev. Dr. David Lower  
Associate Pastor ..... Rev. Shannon Dill  
Associate Pastor ..... Rev. Phil Brown  
Director of Music & Organist..... Clair Maxwell  
Director of Children’s Ministries.....Catherine Anne Thomas  
Director of Saint Luke’s Little Saints Preschool..... Carol Perry  
Treasurer.....Mark Rogers  
Program Coordinator for CE & Music Ministry..... Melissa King  
Intern for Children & Youth Ministry.....Erin Rugh  
Church Administrator.....Lindsay Moss  
Interim Facility Manager.....Roby Price  
Receptionist..... Sally Hawkins  
A/V Director.....Roby Price

**SAINT LUKE’S PERIMETER COUNSELING CENTER**

**Georgia C. Griffin, J.D., M.Div.**  
Director, Perimeter Center  
Licensed Marriage & Family Therapist/Mediator  
404.636.1457, ext.452 • www.cccgeorgia.org

**SERVING TODAY**

**Chapel Guild**– Donna & Rich Crutchfield  
**Open/Close**– Jay Lee

**LEADERSHIP**

**ELDERS**

**Class of 2019:**

Al Bridges, Beth Eisenmesser,  
Sonny Jester, Bob Pile, Bob Polensek,  
Terri Potter, Whitney Samuelson,  
Steven Vivian, Sydney Sloan (*Youth Elder*)

**Class of 2020:**

Carol Ciepluch, Leslie Hamlin, Kay  
Loerch (*Clerk of Session*), Florence  
Luranc, J J Singley, Kelly Sloan,  
Steve Thornton, Brad Troha

**Class of 2021:**

Bob Burroughs, Steve Cashwell (*Asst.  
Clerk of Session*), Tracy Coffie, Val  
DeFriece, Matt Fogarty, Nael McCarty,  
Todd Parker, Kristen Wescott

**DEACONS**

**Class of 2019:**

Melissa Blakely, Alyson Cohen,  
Mark Douglass, A.J.Favero,  
Carol Hickey, Dorothy Kitchens  
(*Moderator*), Debbie Parkes, Carol  
Waller, Al Wang, Rosie Coffie (*Youth  
Deacon*)

**Class of 2020:**

Thomas Brown, Karleen Buchholz,  
Jenny Cumiskey, Ron Davis, Kris Hull  
(*Vice Moderator*), Daryl Moore, Emily  
Ritzler, Vivian Smith, Suzanne Thatcher

**Class of 2021:**

Marylyn Brown, Kelda Hearn, Janis  
Jones, Alan Keel, Christy Keohane, Betsy  
King, Molly Naugher, Gena Spears,  
Steve Wassell



**SAINT LUKE'S**  
PRESBYTERIAN CHURCH



October 14, 2018 8:15am



1978 Mount Vernon Road Dunwoody, GA 30338  
770.393.1424 www.slpres.org Office Hours: M-F, 8:30am-4:30pm

**October 14, 2018**

21st Sunday after Pentecost

**Liturgical Color:** Green

*Liturgical colors can orient us to the season of the church year and help to engage the sense of sight in worship. Green is used for all other time periods (called Ordinary Time) not marked by a specific festival or season.*

**SUNDAY SCHEDULE**

8:15am Chapel Communion Service

9:15am Sunday School

10:30am Sanctuary Worship Service

*Nursery available at all services and Sunday School.*

**MISSION**

Responding to God's call and empowered by the Holy Spirit, we invite all to join us in knowing, serving, and sharing Jesus Christ here and around the world.

**VISION**

To be a beacon of faith, hope, and love—every member an active disciple in Christ's ministry.

**WELCOME, GUESTS!**

We are delighted you are worshipping with us.

**DURING** the Welcome, please print the requested information on the Friendship Pad and pass the Friendship Pad down the pew.

**AFTER** the worship service, please join us outside the Chapel where our Pastors will be available to answer questions and provide you with a loaf of freshly-baked bread.

**FOR MORE** information about our programs, ministries or membership, please contact one of our Pastors at 770.393.1424, or visit our website: slpres.org.

**THAT ALL MAY WORSHIP**

**ASSISTIVE** hearing devices, large print hymnals, large print bulletins and back cushions are available. Please contact an usher for further assistance.



**CHILDREN** are a precious part of our church family, and we welcome them in worship. Worship notebooks and tactile activities are available on the table just outside the Chapel doors. For your convenience, there is a Family Restroom located in the administrative office's hallway, on the first floor, near the main lobby.

**HAVE YOU LOGGED ON TO REALM?** — We have a new database and we need you to log in! Why? So we have your most up-to-date information! You can access realm at: <https://onrealm.org>, or by going to the member login tab at the top of our website. If you are a previous user of the former system you should be able to log in using the same credentials as before: your primary email account and your password. (Some previous passwords may not have the correct amount of digits and may need to be reset.) If you don't remember your password you can use the password reset function that is present on the login screen. If you have difficulty or if you are a 1<sup>st</sup> time user of our online services then send an email to [realm@slpres.org](mailto:realm@slpres.org) and someone will respond and help you.

**BULLETIN/HIGHLIGHTS DEADLINE**—Please submit all information for the bulletin and/or Highlights on Monday. Announcements are reviewed by staff on Tuesdays and will be edited for space and content.

**NEW MEMBER INQUIRER'S CLASS**— If you are interested in learning more about Saint Luke's, the Presbyterian faith tradition, and what it means to be a member of this wonderful church, please join senior pastor David Lower for a New Member Inquirer's Class on **October 14, 21, and 28 at 9:15 am** in the Session Room (room 109). New members will be welcomed during the 10:30am service on **Sunday, October 28th**. Childcare provided during classes. Contact David Lower with questions: [davidlower@slpres.org](mailto:davidlower@slpres.org) / 770.393.1424, ext. 223.

**OWLS LUNCHEON ON OCTOBER 23rd**— Please join us on Tuesday, October 23rd at 11:30am for lunch followed by a surprise program with Saint Luke's own Jean Kammerer. Please contact Nancy Self for more information at [nself@comcast.net](mailto:nself@comcast.net).

**SAINT LUKE'S UPCOMING EVENTS  
MARK YOUR CALENDAR**

- Sunday, October 14 - Pernoshal Park Picnic & Blessing of the Pets
- Sunday, October 28 - Trunk-N-Treat
- Sunday, November 11 - Celebrate the Arts, Thanksgiving Concert benefitting Family Promise
- Sunday, November 18 - City of Dunwoody, Electronics Recycling Event

## ADULT MINISTRY

**Shannon Dill**    shannondill@slpres.org / 770.393.1424 ext. 229

### ADULT SUNDAY SCHOOL

Individual classes have begun. Please see the website for a full description of each class. (<http://slpres.org/program-ministries/adult-ministry/sunday-school>)

Faith Foundations: Room 232

House to House: Room 203

Seasons of the Spirit: Room 231/233

Soul Food: Room 234/236

### FRIDAY MORNING MEN'S BIBLE STUDY

Fellowship and Bible study every Friday from 6:40-8am in the Parlor with Dan Joyce.

### BIBLE STUDY: "WAYFARERS"

Come join David, Shannon or Phil as this week's preacher leads a study of the scripture for the upcoming Sunday's worship. Meet on Wednesdays at 10am in the church library.

## MUSIC MINISTRY

**Clair Maxwell**    clairmaxwell@slpres.org / 770.393.1424 ext. 227

### THE CHOIR NEEDS YOU

YOU should be in a choir this fall! Choirs are fun opportunities for: getting to know other church members, growing in your personal knowledge and faith, and enhancing your worship experience. Contact Clair about more information on one of our choirs.

### WESTMINSTER AND CHERUB CHOIR

Our children's choirs will be singing on the following dates:

October 21 – 11:30 am - Westminster and Cherub Choirs (church luncheon)

November 4 – 10:30 am – Westminster Choir only

December 16 – 10:30 am – Westminster and Cherub Choirs (Lessons and Carols)

## In Preparation for Worship

"I believe the promises of God enough to venture an eternity on them."

– Isaac Watts



### Prelude

Spirit of the Living God

### Welcome and Announcements

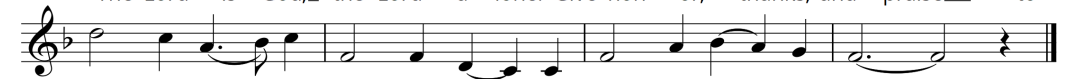
*If you are new to Saint Luke's today, welcome, we are so glad you are here! We have a gift of fresh bread we would love to give to you as a token of our gratitude. Please introduce yourself after worship to receive your welcome gift.*

*Please take the time now to fill out the Friendship Pads situated at the end of each pew. Write down your names and pass the pad down the pew, so that you may greet your pew neighbors by name and that we may know you are here.*

### Call to Worship\*



The Lord is God, the Lord a-lone! Give hon - or, thanks, and praise to  
With all your heart, with all your soul, with all your mind, and might, O  
At night or day, at home, a-way, to- geth - er and a - part, O  
The Lord is God, the Lord a-lone! Give hon - or, thanks, and praise to



God, the ma - ker of all things and giv - er of our days.  
peo - ple, love the Lord, your God, the source of truth and light.  
chil - dren, take these ho - ly words and keep them in your heart.  
God, the ma - ker of all things and giv - er of our days.

### Hymn #667\*

When Morning Gilds the Skies

### Call to Confession\*

**Leader:** The Lord be with you.

**People:** And also with you.

**Leader:** Let us pray.

## Prayer of Confession\*

O God of the Covenant,  
you led Israel, and us, through the waters of the ultimate sea,  
that we might freely choose to follow you.  
We confess, however, that too often we disregard your covenant  
and disobey your commands.  
You offer life, we choose death;  
you call us to costly discipleship, we make do with convenient faith;  
you give abundant grace, we cling to guilt and shame.  
In your mercy, forgive us, and empower us to follow the way of Jesus Christ,  
so that, this day and every day, we may serve the Lord.  
Hear now the silent prayers on our hearts...  
(*Silence is kept for personal reflection.*)

Leader: Lord, in your mercy.  
People: Hear our prayer. Amen.

## Assurance of Forgiveness\*

**Song of Praise #606\*** Praise God, from Whom All Blessings Flow

Praise God from whom all blessings flow, praise God all creatures here below.  
Praise God above, ye heavenly host, praise Father, Son and Holy Ghost. Amen.

## Passing the Peace of Christ\*

Leader: May the peace of Christ be with you.  
People: And also with you.

## Prayer for Illumination

**Scripture Reading** Joshua 24:1-15, *pages 215-216 of the Old Testament*

Leader: The Word of the Lord.  
People: Thanks be to God.

## Tell Us Our Story

Shannon Dill

*Children are always welcome to stay in worship. If preferred, parents may take their child(ren) to child care in Room 114.*

## Sermon

"Whom Will We Serve?"

David Lower

## YOUTH MINISTRY

Phil Brown philbrown@slpres.org / 770.393.1424 ext. 238

### HERE'S WHAT'S COMING UP IN YOUTH MINISTRY:

#### October 14

**Sunday School:** Meet at **9:15am** in the lobby to head to breakfast. Bring money  
**Blessing of the Pets: 5:00pm** at Pernoshal Park in Dunwoody. Family picnic to follow.  
Bring your own food. No regular youth group that evening.

#### October 21

**Sunday School:** We will meet upstairs in the youth room at **9:15am**  
**Middle School Youth Group:** s'mores and campfire stories at church **5:00-6:30pm**  
**High School Youth Group:** Dinner, S'mores, and campfire stories @ Wassell House (4916  
Parliament Way, Dunwoody, 30338.) **7:00-8:30pm.**

### FAMILIES WITH COLLEGE STUDENTS

Each year, Montreat hosts a College Conference, which features engaging keynote speakers, thought provoking workshops, meaningful worship services, and much needed sabbath in the mountains of North Carolina. We are excited to be taking a group to this year's conference, which will be **January 2-5, 2019!** If your college student would like to go, have them register at <https://tinyurl.com/SLCCM19>. Don't hesitate to reach out to Erin Rugh (erinrugh@slpres.org) with questions.

## SPLASH! CHILDREN'S MINISTRIES

Catherine Anne Thomas    cathomas@slpres.org / 770.393.1424 ext. 228

### **BREAKFAST CLUB BEFORE SUNDAY SCHOOL!**

All first through fifth graders are invited to "ease in" to class time from 9:15 to 9:30am in the Sheppard Hall Loft. Come for eye-opening snacks, low-key activities, and conversation with friends and teachers!

### **TRUNK-N-TREAT IS SUNDAY, OCTOBER 28!**

We are just weeks away from one of Saint Luke's most popular family fellowship events: Trunk-n-Treat! Here's how it works:

- Our carnival for all kids begins at 4:30pm in the side/back parking lot that runs by the church playgrounds.
- Families may park and decorate their cars in the Mount Vernon parking lot before or during the carnival. Please use the Mount Vernon entrance only.
- Families with decorated trunks and tailgates should bring enough candy for around 125 children. If you don't want to decorate your car but want to still donate candy, park in the Manhasset lot and bring your candy to the front lot for distribution.
- We have prizes for trunk/tailgate decorations and costumes! To qualify for judging in either of these categories, please stop by the judging table to get a number to either tape on your car or wear on your costume. This will help our judges identify winners even if they don't know their names.
- The actual candy collection begins at 5:30pm- and not one second before! Listen for the official announcement!
- At 6:00pm, everyone is invited to dinner, our costume parade, and prize announcements in the Great Hall. Advance dinner reservations are requested, but we will accommodate a limited number of "at the door" requests. Go to slpres.org for dinner details and reservations.

### **Affirmation of Faith\***

Apostles' Creed

I believe in God, the Father Almighty,  
Maker of heaven and earth,  
and in Jesus Christ, his only Son, our Lord;  
who was conceived by the Holy Ghost,  
born of the Virgin Mary,  
suffered under Pontius Pilate;  
was crucified, dead, and buried;  
he descended into hell;  
the third day he rose again from the dead;  
he ascended into heaven,  
and sitteth on the right hand  
of God the Father Almighty;  
from thence he shall come to judge the quick and the dead.  
I believe in the Holy Ghost;  
the holy catholic Church;  
the communion of saints;  
the forgiveness of sins;  
the resurrection of the body;  
and the life everlasting. Amen.

### **Offering Invitation**

*Giving is a tangible sign of worship. If you give electronically, there is a blue, laminated, electronic giving card in the pew rack to place in the offering plate as it is passed.*

### **Offertory**

His Eye is on the Sparrow

### **Song of Thanksgiving\***

**We give thee but thine own, whate'er the gift may be;  
All that we have is thine alone, a trust, O Lord, from thee.**

### **Holy Communion**

*Communion will be served by intinction (dipping the bread into the cup). Everyone is invited to participate in the sacrament. The cup holds grape juice, not wine, during this service. A server with gluten-free wafers will be standing directly in front of the communion table for those who prefer this option. If you would prefer to be served where you are sitting, please raise your hand.*

### **Prayer of Thanksgiving**

## The Lord's Prayer

Our Father, who art in heaven,  
hallowed be thy Name,  
thy kingdom come,  
thy will be done,  
on earth as it is in heaven.  
Give us this day our daily bread;  
and forgive us our debts,  
as we forgive our debtors;  
and lead us not into temptation,  
but deliver us from evil.  
For thine is the kingdom, and the power,  
and the glory, forever. Amen.

## Words of Institution

## Communion Music

### Closing Hymn #645\*

Sing Praise to God Who Reigns Above

### Benediction\*

### Postlude\*

Immortal, Invisible

*Music: All rights reserved. Reprinted under OneLicense.net (A-719333).*

## SUNDAY SPOTLIGHT:



**TODAY! BLESS YOUR PET**— Join us **TODAY at 5 pm** at Pernoshal Park for the Blessing of the Pets. All pets—furry, floaty, feathery and slithery—are welcome! Bring your own picnic to enjoy afterwards.



**SAINT LUKE'S LAUNCH PARTY AT 11:30am ON OCTOBER 21st**— All hands on deck! Please join your Saint Luke's family as we swab the decks and trim the sails in preparation for setting sail together in the Great Hall on October 21st. After 10:30am worship we will kick off our 2019 Commitment season with nautical fun, food, and fellowship. Our Commitment Season will begin on October 21st and end with Commitment Sunday on November 11th. Stay tuned for more details in the coming weeks. In the meantime, dust off your captain's hat and your life jacket, and get ready to set sail with Saint Luke's!



**SAVE THE DATE: THANKSGIVING CONCERT ON NOVEMBER 11** — Join us for a Thanksgiving Concert to benefit Family Promise on Sunday, **November 11, 2018, at 5:00pm** in the Sanctuary. Hear choirs from Saint Luke's and Peachtree Road Lutheran Church, along with soloist, instruments, piano and organ. Suggested donation is \$20.



**WEDNESDAY NIGHT FEAST— Different Just Like Me:** This Wednesday, **October 17th**, we will learn from some special people about how to develop a better understanding of those whose needs differ from our own. For more information or to register, go to [slpres.org](http://slpres.org) or fill out the blue pew cards. Here is the Wednesday evening schedule:

**5:00-5:45 pm** Children's choirs (Westminster and Cherub Choirs) rehearse

**5:45-6:25 pm** Dinner! Cost is \$7 per person (\$3 for 5th Grade & under), \$20 per family max

**6:25-7:15 pm** Program for all age groups (go to [slpres.org](http://slpres.org) for weekly program information)

**6:30-7:20 pm** Festival Ringers (handbell choir) rehearse

**7:30-9:00 pm** Chancel Choir rehearses



**TARTAN TROT THANK YOU**— A hearty Scottie THANK YOU to all who have submitted a pledge to sponsor the 2019 Tartan Trot. With your help, we have already raised more than \$50,000 in support of Saint Luke's outreach programs. We will continue to accept pledges and gifts through race day, so feel free to pledge online, fill out a pledge card, or email us if you would like to sponsor. If you have pledged and have not picked up a sponsor gift, please contact Rebecca Strickland at [rebstrick@gmail.com](mailto:rebstrick@gmail.com).