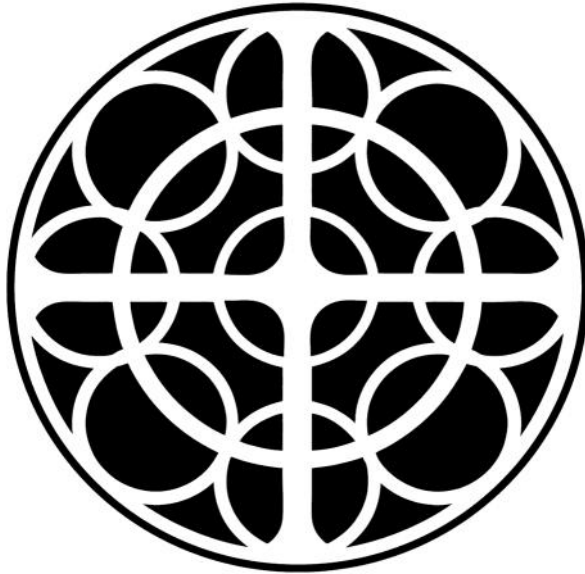


ST. LUKE'S

PRESBYTERIAN CHURCH (USA)



11 a.m. ~ November 10, 2013

Thirty-second Sunday of Ordinary Time

Liturgical Color: Green

A Church of the Word and Sacraments

Our Mission

Responding to God's call and empowered by the Holy Spirit, we invite all to join us in knowing, serving, and sharing Jesus Christ here and around the world.

Our Vision

*To be a beacon of faith, hope, and love ~ every member
an active disciple in Christ's ministry.*

We Assemble in God's Name

In Preparation for Worship

You are worthy of all praise, O God; Your judgment is sure. Like a refiner's fire, You purify Your people and temper their desires. The heat is Your love for them; the flame is the Spirit's power within. The light is the light, which illumines the world. Come, fire from above, and fill our being, as we worship and adore our Maker. Amen.

Gathering Prayer of Adoration

Jason Whitener

Prelude

Grand Jeu

Pierre du Mage
arr. Dennis Eliot

*Call to Worship

Psalm 145

Leader: Every day I will bless You, and praise Your name forever and ever.

People: **Great is the Lord, and greatly to be praised; Your greatness, O God, is unsearchable.**

Leader: You fulfill the desire of all who fear You; You hear their cries and save them.

People: **My mouth will speak the praise of the Lord, and bless Your holy name forever and ever.**

All: **Let us worship God!**

†*Processional Hymn #361

How Firm a Foundation

FOUNDATION

Celebration of Community

Minute for Angel Tree

Jan Slater

Introduction of New Members

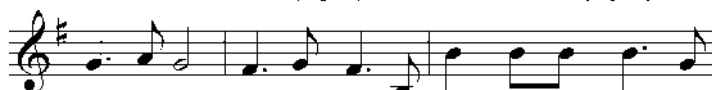
*Invitation to Confession

O Lord Hear My Prayer

Jacques Berthier



O Lord, hear my prayer. O Lord, hear my prayer.



When I call, an-swer me. O Lord, hear my prayer. O



Lord, hear my prayer. Come and lis-ten to me.

Words & Music: © 1982, Les Pesses de Taize, GIA Publications, Inc. All rights reserved. Reprinted under OneLicense.net A-71933.

***congregation standing; † seating of worshippers.**

*Call to Prayer

Leader: The Lord be with you.

People: And also with you.

Leader: Let us pray.

*Prayer of Confession (in unison)

Far be it from us that we should forsake You, O Lord, to serve other gods. Yet, we confess our allegiance is not what it should be. You brought our ancestors out of Egypt, yet we do not always trust You to hear of our needs. You protected them all along the way that they went; yet we wonder if You hear us when we cry to You. We hear You are a jealous God and will not forgive our transgressions or our sins, yet we are bold to lay them before You and implore You. Have mercy upon us and give us Your grace. Amen.

*Assurance of Forgiveness

†*Gloria Patri

Glory be to the Father, and to the Son, and to the Holy Ghost; as it was in the beginning, is now, and ever shall be, world without end. Amen. Amen.

We Hear God's Word Proclaimed

Tell Us Our Story

Catherine Anne Thomas

Children are always welcome to stay in worship.

However, if you prefer, parents of children may take them to the nursery.

Parents of children in pre-k and kindergarten may take them to the Faithful Friends Class in Room 121.

Morning Prayer & The Lord's Prayer

Our Father Who art in heaven, hallowed be Thy name. Thy kingdom come, Thy will be done, on earth as it is in heaven. Give us this day our daily bread; and forgive us our debts, as we forgive our debtors; and lead us not into temptation, but deliver us from evil. For Thine is the kingdom and the power and the glory, forever. Amen.

Old Testament Reading

Psalm 65:1-8

Jim Giesler (USCG)

Pages 498-499

Leader: The Word of the Lord.

People: Thanks be to God.

Anthem

Like the Murmur of the Dove's Song
Chancel Choir and Congregation

arr. Michael Burkhardt

Choir: 1. Like the mur - mur of the dove's song, Like the
 All: 2. To the mem - bers of Christ's bod - y, To the
 All: 3. With the heal - ing of di - vi - sion, With the

chal - lenge of her flight, Like the vig - or of the
 branch - es of the vine, To the Church in faith as -
 cease - less voice of prayer, With the pow'r to love and

wind's rush, Like the new flame's ea - ger might:
 sem - bled, To our midst as gift and sign:
 wit - ness, With the peace be - yond com - pare:

Come, Ho - ly Spir - it, come.

Text © 1982, Music © 1969 Hope Publishing Co., Carol Stream, IL. All rights reserved.
 Reprinted under OneLicense.net A-71933.

(Parents may return to their seats during the Anthem)

New Testament Reading

2 Timothy 4:6-8, 16-18
 Pages 1039 and 1040

Jason Whitener

Leader: The Word of the Lord.

People: Thanks be to God.

Sermon

"The Hope of All the Earth"

Jason Whitener

We Respond to God's Word

*The Apostles' Creed (in unison)

I believe in God the Father Almighty, Maker of heaven and earth, and in Jesus Christ His only Son our Lord; Who was conceived by the Holy Ghost, born of the Virgin Mary, suffered under Pontius Pilate, was crucified, dead, and buried; He descended into hell; the third day He rose again from the dead; He ascended into heaven, and sitteth on the right hand of God the Father Almighty; from thence He shall come to judge the quick and the dead. I believe in the Holy Ghost; the holy catholic church; the communion of saints; the forgiveness of sins; the resurrection of the body; and the life everlasting. Amen.

Offering & Offertory

Cantilena

Robert J. Powell

*Doxology

Praise God, from Whom all blessings flow; Praise Him, all creatures here below; Praise Him above ye heavenly host; Praise Father, Son, and Holy Ghost. Amen.

*Prayer of Dedication

We Go in God's Name

*Sending Hymn #262

God of the Ages, Whose Almighty Hand

NATIONAL HYMN

*Benediction

*Benediction Response

What Does the Lord Require?

Jim Strathdee

Chancel Choir

What does the Lord require of you? To seek justice and love kindness and walk humbly with your God. (*Micah 6:8*)

*Postlude

Faith of Our Fathers

arr. James Pethel

~~~~~

### Join us in Welcoming our New Members

Bob Joyner

Deacon: Meg Wallace

Jan Kilgore

2520 Briers North Drive

Dunwoody, GA 30360-2078

Home: 770-454-7972

Bob: 404-281-1493 / joyner.bob@gmail.com

Jan: 404-731-5725 / janiskilgore@mindspring.com

Dale & Beth Kiel

Deacon: Meg Wallace

230 Summerhouse Lane

Sandy Springs, GA 30350

Home: 770-558-2836

Dale: 704-763-8447 / dale.a.kiel@hotmail.com

Beth: 704-488-7241 / beth.h.kiel@hotmail.com

Richard & Christine Lawry

Deacon: Meg Wallace

1850 Gramercy Court

Dunwoody, GA 30338

Home: 770-393-4436

Richard: 404-408-1234 / rlawry@egholdings.com

Christine: 404-275-0600 / clawry@bellsouth.net

## Flowers

The flowers are given by the Veterans of St. Luke's to the Glory of God,  
in memory of America's men and women who sacrificed their lives in our nation's wars.

~~~~~

American Flags

We want to thank the St. Luke's veterans who set up the flags
along Mt. Vernon and Manhasset for Veteran's day this year. These are a dramatic reminder to all in
the community of this special day and those who serve and have served our country.

~~~~~

## Serving Today

**Acolytes:** Crucifer: Scott Whitener, **Candle Lighter:** Catherine Kitchens,

**Bible Bearer:** Rebecca Miller, **Bell Ringer:** Mary Frances Kitchens

**Chancel Guild:** Ellen & John Massey

**Continental Breakfast:** Joanna, Tom, Landis, Owen & Walker Mangum

**Faithful Friends:** Catherine Anne Thomas

**Greeters:** Jay Burton (USN), Tom McKinney (USA), Donna & Rich Crutchfield

**Nursery Supervisor:** Holly McMillan

**Open/Close:** Jim Cox

**Sound Crew:** Roby Price

**Ushers:** John Tienken (USA) - captain, Joe Billions (USMC), Ken Painter (USA),

Laura Strange (USN & GaARNG), David Wallace (USN)

~~~~~

Stephen Ministry: We are honored by the support we have received for our pastors and staff as we began the Stephen Ministry in 2008. We celebrated our annual Stephen Ministry Sunday November 3. It was a pleasure to serve continental breakfast to many hungry members! Jason's sermon, "Pass It On" encouraged all of us to share with chosen family and friends the difference they have made in our lives. If you were not in attendance, we encourage you to listen to the sermon via our website. If anyone would like additional Blue Ribbons, please contact Cathie Rogers. If you experienced a particularly special moment with your chosen blue ribbon recipient(s)- "Pass It BACK" to us! We would love for our congregation to know about how good does go around! Share your message via email to Stephen Leader Cathie Rogers at cathierogers@gmail.com.

Family Promise Day at Chick-fil-A Jett Ferry! Lend your support on **Saturday, November 16**, from 6 a.m. to 10 p.m. at Chick-fil-A, and they will donate 10% of the day's sales to FAMILY PROMSIE! Great Fun...Great Prizes...Chick-fil-A Spin the Wheel! There will be inflatables from 1 to 6 p.m., including a castle, a giant slide, and an obstacle course. Chick-fil-A is located at 2480 Jett Ferry Road, Dunwoody, in the Williamsburg at Dunwoody Shopping Center.

Family Promise: Our next hosting week of volunteer opportunities will be **November 24 through December 1**. Thanksgiving week gives us a special opportunity to show our appreciation and share our gifts with families in need. Please check Highlights for a direct link to sign up at: <http://goo.gl/GZqMzM>. Betsy and David King (770-394-2742), Beth Underhill (678-491-1765), and Annie Hardy (770-804-8049) will again serve as our volunteer coordinators. .

Your “Foundation for the Future” Dollars at Work: Thanks to the "Foundation for the Future" campaign and the leadership of Elder Dave McKenney, we are proceeding with several projects to improve our facilities. The work has already begun for new sanctuary windows and will take several weeks to complete. We are also having the EIFS (stucco) refinished on the sanctuary. This is being done by Painter Waterproofing and Restoration, a company owned by our own Tate Painter. When these projects are finished, the shed roofs on both sides of the sanctuary will be re-roofed. Then, when all the trucks have left, we will have the parking lot resealed and restriped.

KNOW

FEAST for ALL! You can sign up weekly for dinner on the blue pew cards, or call Sally Hawkins in the church office by noon on Monday. To access the menu for Wednesday Night Dinners go to <http://www.slpres.org/fellowship.asp> and click on “click here to view Fall 2013 menu” or check a copy of the menu on the lobby bulletin board.

Men’s Bible Study: Meets every Friday, year round, 6:40 - 8 a.m. in the Parlor, Room 145, and is led by Dave Elkins. Gather with other men before you start your day to share in Bible study and fellowship. We are studying First John.

St. Luke’s Presbyterian Women (SLPW)

Circle Meetings (All Circle meetings are held in the Parlor, Room 145.)

Monday, November 11, 9:30-11 a.m. (Child care is available for this circle.)

Monday, November 11, 7:30-9 p.m.

Tuesday, November 12, 9:30-11 a.m.

Circle item for November: Items for Santa Claus Express. **Book Study:** “Namesake: When God Rewrites Your Story” by Jessica LaGrone. Lesson: Chapter 2: Let Go and Grab onto God. The story of Jacob.

Tuesday, December 3 at 7 p.m.: Coordinating Team Meeting

Questions? Contact Ellen Womack, Moderator, at epwomack@bellsouth.net or 770-913-0314.

Adult Sunday School ~ Next Sunday ~ 9:30-10:30 a.m.

Faith Foundations, Room 232: We are studying the Gospel of Matthew with emphasis on the Church as an earthly manifestation of the kingdom of God. Lesson: Character Formation of the Messiah’s People (Matthew, Chapter 7).

FINCH (Families in Christ), Room 203: This class brings together parents and adults to learn and grow in our faith and our ability to share that faith with our families. This week we will do a study from the book, *Sticky Faith*” to help learn ways to encourage kid’s faith to “stick” as they grow up. The next two weeks we will do a study from the Marriage Enrichment series where we will have some guest teachers from the SLPC Marriage Enrichment Group.

The New Testament - The Historical Jesus, Room 145, Parlor: This is a series of DVD lectures by Professor Bart D. Ehrman, James A. Gray Distinguished Professor at the University of North Carolina at Chapel Hill. Dr. Ehrman’s lectures will extend into early December, 2013.

Seasons of the Spirit, Room 231-233: A biblically-based discussion class following the revised common Lectionary. Lesson: Do we truly understand God’s steadfast love? (Psalm 118)

Soul Food, Room 235, Finding Sustenance for Faithful Living: Fellowship, study and discussion on a range of topics related to spirituality in our lives. The “Thoughtful Christian” curriculum provides the source material for this class.

Questions? Contact Shannon Dill at shannondill@slpres.org or 770-393-1424 ext. 229.

Youth Connection (SLYC)

Youth Sunday School: Sundays, 9:30-10:30 a.m. in the Youth rooms

Youth Connect: Sundays, 5-7 p.m., in the Great Hall

Youth Choir: Sundays, 7-8 p.m., in the Choir Room

FEAST for ALL Youth, Wednesdays: Dinner together from 5:45-6:25 in the Great Hall; Program from 6:25-7:15 in the Senior High Room. We will check in about the headlines from the news and then spend some time hanging out and re-energizing through recreation.

News from SPLASH! Children's Ministries

Family Advent Calendars: Our matchbox calendars with Advent activities were so popular last year, we decided to offer them again to families who may not already have one. Craft tables will be set up in the lobby throughout November, along with the packet of daily activity slips. If you still have your calendar, pick up a new packet of slips.

SHARE

Last Sunday, St. Luke's Church welcomed 29 guests to its worship services. Each Sunday, many of our pews will have a first-time or repeat visitor. Your warm welcome to our guests expresses the inviting and hospitable character of this congregation. Your smile and welcoming word make a difference.

Marriage Enrichment Group Monthly Meetings: Mark your calendars for the third Sunday of the month for our group meetings. Our next meeting is **TODAY, November 10** (one week earlier) from 5 to 6:30 p.m., starting in Room 203. Child care is provided. New couples or couples with questions may contact Kimey and Mark Reed at kimeyreed@gmail.com or 404-441-8614.

Veterans' Day Dinner at Chick-fil-A Jett Ferry! Chick-fil-A at Jett Ferry would like to thank all veterans for serving our country. On Veteran's Day, **November 11**, from 5 to 8 p.m. you and your spouse are invited to be their guests for dinner. It's their small gift to you. Chick-fil-A is located at 2480 Jett Ferry Road, Dunwoody, in the Williamsburg at Dunwoody Shopping Center.

Jobs & Java - St. Luke's Job Seekers Support Group on Tuesday, November 12: We will meet at noon in Room 230 for networking and support. For information, contact Jim Garrison, jimgarrison@mindspring.com, or Jared Elliot, jared.elliott@att.net.

St. Luke's Men's Golf Fellowship, November 16: We play the first and third Saturday of the month, March-November. Join us for a great time of golf and fellowship. Sign up at st-lukes-golf@att.net, providing an email address and cell phone number. Contact Dave Elkins at d.elkins@att.net or 770-458-6415 if you would like to play.

Presbyterian Women Bake Sale - Sunday, November 17 & December 15: November 17, 9 a.m. to 12:30 p.m., is a bake sale with their famous loaves of pumpkin bread and cranberry-orange bread in large and small loaves. The small loaves will be \$4 and the large loaves will be \$8. You may place your orders for triple-chocolate bread, orange-cranberry bread, and pumpkin bread for pick-up on December 15. If you want to order a quantity or pre-order, please sign up in the lobby by November 10, or contact Katherine Robeson at khrobeson@gmail.com.

Music Ministry Sunday, November 17 in worship: Join our choirs in song and prayer for a special celebration of our ministry in music.

Square Dance Time - Sunday, November 17, 5:30-7:30 p.m. in the Great Hall: Get out your dancing shoes, pack up the family, and come to St. Luke's for a country dinner of hot dogs, beans, salad, veggies, iced tea, water, lemonade and a great dessert of apple pie and ice cream. Then it is SQUARE DANCE TIME!! No need to worry, we have a caller that will help those who need a little help to learn how to square dance and for those who know, here is a chance to brush up on your skills. Donations will be accepted at the door. See the information in the lobby.

Life Line Screening at St. Luke's, Monday, November 18: Do you know how to recognize the warning signs of a stroke? Protect your health by finding out your risk of having a stroke by participating in the Life Line Screening that will be here at St. Luke's. Through ultrasound they evaluate the carotid arteries for the buildup of fatty plaque which is the leading cause of stroke. To sign up, you MUST pre-register through the Helping Hands website (www.helpinghandsforhealth.com). You will get a \$10 discount and they will donate \$10 to St. Luke's. Pick up a brochure in the main lobby kiosk for more information. Questions? Contact Sally Hawkins in the church office.

Faith & Film, and Potluck Dinner on Friday, November 18: All adults are welcome to join us for a potluck dinner and movie in Room 207 in Sheppard Hall (Senior High Room). Dinner starts at 7 p.m. and the movie starts at 7:45 p.m. We will be watching *The Hiding Place*. Please RSVP at connie@salesfitness.com to let Connie and Nick Nicholson know that you are coming and if you would like to help with food.

Better Marriages Getaway Weekend for Your Marriage: Registration is underway for the Better Marriage Getaway Weekend, "Pathways to the Heart", **February 14-16, 2014** at the Sea Palms Resort in St. Simons Island, GA. The registration fee is \$225 per couple before January 13 (then \$255). The hotel room is booked separately at \$129 per night. Registration forms can be found at www.BetterMarriagesGA.org or contact Kimey and Mark Reed at kimeyreed@gmail.com or 404-441-8614 for more information. This would be a fantastic Valentine's gift.

2014 Flowers: To give flowers in memory or in honor of someone or for a special event, sign up now! Cost is \$80. The calendar is located on the main lobby bulletin board. Please sign up or call Celeste Fischer, 404-434-8099 or Faye Cashwell, 770-409-1960.

The Worship Exploratory Task Force Committee wants to hear from you! We are engaged in ongoing discussions on how we can better serve our congregants in worship. Please contact a member of the committee or Bruce Jones - chair, stratocaster2@comcast.net or 404-304-5346, with your comments, concerns, and suggestions. Members of the committee are Mary Louise Connor, Parker Cutler, Debi Elkins, Jim Giesler, Jill Hudson, Tom Loftis, Clair Maxwell, Wendy Moreland, Paula Morris, Roby Price, Kimey Reed, Edna Schell, Jim Schell and Jason Whitener.

Visit St. Luke's Library! Many of you may not realize that we have a wonderful small library here at St. Luke's. It is located upstairs directly above the lobby and is open to all members. We have everything from children's books to books on theology - really something for everyone. Stop by to see what you may like to read next.

From the Choir Loft

CHRISTMAS is just around the corner. Be a part of choir as we rehearse Christmas music for Toys for Tots and Lessons and Carols. It would be great to have YOU singing up front for these special seasonal events. Contact Clair Maxwell (clairmaxwell@slpres.org or 770-393-1424 ext. 227) about participating and sharing your musical gifts. Additionally, you are welcome to join the Chancel Choir on **Sunday, November 24** as we sing "Now Thank We All Our God." Join us!

Continued on page 10

Chancel Choir (adults) Wednesdays, 7:30-9 p.m.
Festival Ringers (youth & adults) Wednesdays, 6:15-7:15 p.m.
Youth Choir (6th-12th grades) Sundays, 7-8 p.m.
Westminster Choir (2nd-5th grades) Wednesdays, 5-5:45 p.m.
Cherub Choir (4 years - 1st grade) Wednesdays, 5:15-5:45 p.m.

SERVE

ArtReach for Outreach! The Trinity Alternative Gift market is holding an art contest for children and youth that **runs through TODAY, November 10**. The winning entries will become the front cover for note cards, angel cards, and Christmas cards to be sold in the market in December, as well as for all of our Christmas season bulletins. Drop your completed pictures in the red drop-box in the main lobby. Questions? Contact Christine Crutchfield (gafrog01@hotmail.com).

Buy Some; Share One: St. Luke's has an ongoing food drive to support local organizations. We ask that **every** time you go to the grocery store, pick up one extra non-perishable item and put it in one of the carts in the main lobby (just inside the doors at the Manhasset entrance) - Buy Some; Share One! Their most needed items are canned meats such as chicken and tuna, peanut butter, jelly, cereal, rice, canned vegetables, cereal and toilet paper. Please help fill the pantry for neighbors seeking assistance. We are now collecting for the Community Assistance Center.

R.O.C.K. (Reaching Out Through Crocheting & Knitting): Wednesdays, 10 a.m. - noon. Men and women, young and not quite so young, of varying skill levels (absolute beginners to experts) are welcome! We make prayer shawls, layette sets for preemies, squares for blankets, and a variety of other items for outreach projects.

Get together with some friends for a continental breakfast here at St. Luke's every Sunday morning. If you and your friends could furnish one of these breakfasts, we will be glad to reimburse you. Please sign up on <http://www.signupgenius.com/go/10C094DADAC22AB9-continental> or contact Jay Burton, jburton@mflaw.com.

Helping Hands: This ministry matches short term or emergent needs in the congregation with available resources. Could you use your time and talent to assist someone in the congregation? Examples are setting up or assisting with a computer, driving a member to an appointment, helping change light bulbs. If this interests you, contact Billy Martin, billybeer214@yahoo.com or 770-441-0373. If you need the Helping Hands team, contact your Deacon.

Looking to serve your church? There is a need for those willing to serve in a friendly and welcoming way as ushers. Duties include greeting everyone, passing out bulletins, taking up the offering, directing congregants during communion, and tidying up after worship. Questions? Contact John Tienken, 770-394-1104, tienkenj@gmail.com.

Looking for a great way to meet other St. Luke's members while serving our congregation? St. Luke's meal ministry provides meals for families or individuals who are recovering from a recent surgery or illness, suffering from the loss of a loved one, or celebrating the birth or adoption of a new baby. If you are interested in delivering a meal to a congregation member or would like more information, please contact Krissy Williams at bkcook71@yahoo.com.

Prayer Ministry: Our St. Luke's Prayer Ministry Team is involved in intercessory prayer. Intercessory prayer is the act of praying on behalf of others. The Bible is clear that Christians are called to be intercessors. If you would like to become a part of the Prayer Ministry Team, contact Paula Barbin, barbin@fulton.K12.ga.us or 678-297-9877.

Special Event for ALL

Wednesday, November 20



STOP HUNGER NOW, an international relief organization, provides the “know-how” and the supplies; we provide the workers! Help us curb world hunger from 6:15-7:30 p.m. in the Great Hall as we package 10,000 dehydrated meals. All ages are welcome. The menu for us is beans and rice, with dinner at 5:45 p.m. If you wish to sign up for this dinner (\$7 per person), fill out the blue pew card or sign up in the lobby. (This is NOT a part of FEAST for ALL.)

Elders

Class of 2014: Tricia Bridges, Jim Bryant, Faye Cashwell (Clerk of Session), Parker Cutler (Youth Elder), Annie Hardy, Sally Joyce, David King, Dick Miller, John Ray. **Class of 2015:** Jennie Burroughs, Jared Elliot, Tricia Igleheart, Fern Mitropoulos, Mark Reed, Chris Wiseman, Chris Wallace, Les Woodsides. **Class of 2016:** Rich Crutchfield, Mary Guerrant, Tom Loftis, David McKenney, Wayne Radloff, Mark Ryan, David Tharp, Allison Thornton.

Deacons

Class of 2014: Diane Beidl, Jay Burton, Jim Giesler (Moderator), Joyce Johnson, Jean Kammerer, Paula Morris, Luis Sepulveda, Carol Sweigert, Kris Turnbull. **Class of 2015:** Maria Barnhart, Matt Biggerstaff, Sarah Caverhill, Peter Keohane, Julie Knotts, Billy Martin, Gena Spears, Taylor Vivian, Krissy Williams. **Class of 2016:** Sandra Clay, Amanda Dunnick, Shawn Hamlin, Niki Rabren, Katherine Robeson, Rebecca Strickland, Jenny Troha, Michelle Vail, Meg Wallace.

Welcome to our guests!

We are delighted you are worshipping with us! As a guest, you are invited to:

1. During the Celebration of Community please print the requested information on the Friendship Pad and pass the Friendship Pad down the pew.
2. After the worship service, please join Deacon Michelle Vail, Elder Allison Thornton, and our Pastors in the Narthex. They will answer questions and provide you with a Guest Packet and a loaf of bread lovingly made by St. Luke's member, Cindy Nunez.
3. If you are interested in learning more about St. Luke's and/or are interested in joining, please contact Jason Whitener at jasonwhitener@slpres.org. or 770-393-1424, ext. 223.

♿ That All May Worship: St. Luke's strives to be a welcoming church for all. Assistive hearing devices, large print hymnals, large print bulletins and pew cushions are available. Please contact an usher for further assistance.

Parents: During the worship service, if necessary, the parlor is a comfortable place to be with your child and still see the service. Children's Worship Notebooks are available for all ages on the shelves in the Narthex, along with activity sheets pertaining to today's scripture. An usher can assist you.

St. Luke's Presbyterian Church

1978 Mt. Vernon Road, Dunwoody, GA 30338-4617
770-393-1424 Fax 770-393-3278 www.slpres.org

8:30 a.m. Chapel Communion Service ~ 9:30 Sunday School ~ 11 a.m. Sanctuary Worship Service
(Nursery Provided for all services and Sunday School)

Office Hours: 8:30 a.m. - 4:30 p.m. Monday-Friday
(After hours pastoral emergency, please call one of the pastors at home.)

Church Staff

Pastor, Dr. Jason Whitener
Associate Pastor, Rev. Shannon Dill
Associate Pastor, Rev. Phil Brown
Pastor Emeritus, Dr. E. Moss Robertson
Facilities Manager, Roby Price
Receptionist, Sally Hawkins
Treasurer, Gary Phipps

Director of Children's Ministries,
Catherine Anne Thomas
Director of Music & Organist, Clair Maxwell
Director of St. Luke's Little Saints Preschool &
Kindergarten, Carol Perry
Administrative Assistants, Liz Catlett & Bonnie Farrar

Pastoral Counseling

St. Luke's Perimeter Counseling Center ~ Georgia C. Griffin, J.D., M. Div., Director
Perimeter Center, Licensed Marriage & Family Therapist/Mediator
404-636-1457, ext. 452 www.ccgeorgia.org

Last Sunday's Attendance: 8:30 a.m. - 93 11 a.m. - 261 Nursery - 27
Last Sunday's Tithes & Offerings: \$22,189 Financial reports available online.