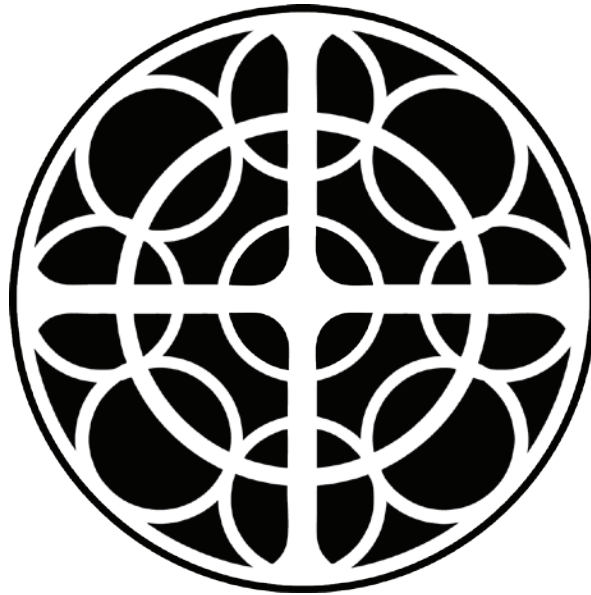


# ST. LUKE'S

---

PRESBYTERIAN CHURCH (USA)



February 9, 2014  
11:00 a.m.

**Our Mission:** Responding to God's call and empowered by the Holy Spirit, we invite all to join us in knowing, serving, and sharing Jesus Christ here and around the world.

**Our Vision:** To be a beacon of faith, hope, and love—every member an active disciple in Christ's ministry.



# ST. LUKE'S

PRESBYTERIAN CHURCH (USA)

1978 Mt. Vernon Road

Dunwoody, Georgia 30338-4617

770-393-1424 www.slpres.org

8:30 a.m. Chapel Communion Service

9:30 a.m. Sunday School

11:00 a.m. Sanctuary Worship Service

*Nursery provided for all services and Sunday School*

### OFFICE HOURS:

Mon. - Fri., 8:30 a.m. - 4:30 p.m.

Dr. Jason Whitener, Pastor

Rev. Shannon Dill, Associate Pastor

Rev. Phil Brown, Associate Pastor

Dr. E. Moss Robertson, Pastor Emeritus



**That All May Worship:** St. Luke's strives to be a welcoming church for all. Assistive hearing devices, large print hymnals, large print bulletins and pew cushions are available. Please contact an usher for further assistance.

**Parents:** During the worship service, if necessary, the parlor is a comfortable place to be with your child and still see the service. Children's Worship Notebooks are available for all ages on the shelves in the Narthex (Sanctuary lobby), along with activity sheets pertaining to today's scripture. An usher can assist you.

FEBRUARY 9, 2014 • 5TH SUNDAY IN ORDINARY TIME  
LITURGICAL COLOR: GREEN

*Green is used to represent spiritual growth.*

## SERVING TODAY

### Acolytes

Supervisor ..... Cailin Thelen  
Crucifer..... Allie Hearn  
Candle Lighter ..... Ansley Wassell  
Bell Ringer ..... Chris Wolfe  
Bible Bearer..... Julia Strickland

**Nursery Supervisor** ..... Emily Ritzler

**Faithful Friends** ..... Amy Parker

**Communion Servers** ..... Dave Elkins, Captain;  
Stan Thornton, Becky & Tom Loftis,  
Allison & Steve Thornton

**Chancel Guild**.....Brid & Tricia Igleheart

**Sound Crew** .....Brad Troha

**Ushers** ..... Miles Young, Captain;  
Keith & Marcy Williams, Pete Shelton

**Continental Breakfast**.....Christine Crutchfield

**Greeters** .....Tom & Sharon Clark

**Open/Close**..... Steve Klein

## WELCOME, GUESTS!

We are delighted you are worshipping with us! As a guest, you are invited to:

1. During the **Celebration of Community**, please print the requested information on the Friendship Pad and pass the Friendship Pad down the pew.
2. After the worship service, please join Deacon Billy Martin, Elder Annie Hardy, and our Pastors in the Narthex (Sanctuary lobby). They will answer questions and provide you with a Guest Packet and a loaf of bread lovingly made by St. Luke's member, Cindy Nunez.
3. If you are interested in learning more about St. Luke's or are interested in joining, please contact Jason Whitener: [jasonwhitener@slpres.org](mailto:jasonwhitener@slpres.org) or 770-393-1424, ext. 223.

### In Preparation for Worship

Merciful God, what no eye has seen, nor ear heard, nor the human heart conceived, You have prepared for those who love You and revealed to us through the gift of Your Spirit. You have sent us in Christ not only the spirit of the world, but the Spirit Who comes from You, that we may know and understand the bountiful gifts You give us. Hear now our worship as we interpret spiritual things to those who are spiritual. Amen.

### Gathering Prayer of Adoration

Jason Whitener

#### Prelude

Beautiful Savior

#### \* Call to Worship

Psalm 112

Leader: Praise the Lord! Happy are those who fear the Lord, who take great delight in God's commandments.

**People: Their descendants will be mighty in the land; the generation of the upright will be blessed.**

Leader: They rise in the darkness as a light for the upright; they are gracious, merciful, and righteous.

**People: For the righteous will never be moved; they will be remembered forever.**

**All: Let us worship God!**

#### \* Processional Hymn #430

Come Sing, O Church, in Joy!

### Celebration of Community

Phil Brown

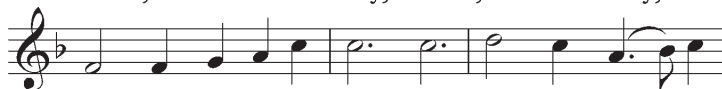
#### \* Invitation to Confession

Lord, Have Mercy / LAND OF REST

© 1986 GIA Publications, Inc. All rights reserved. Reprinted under OneLicense.net A-719333.



Lord, have mer - cy; Christ, have mer - cy;



Lord, have mer-cy up - on us. Lord, have mer - cy;



Christ, have mer-cy; Lord, have mer-cy up - on us.

\* **Call to Prayer**

Leader: The Lord be with you.

**People: And also with you.**

Leader: Let us pray.

\* **Prayer of Confession**

**The path that You choose for us, O God, is: to loose the bonds of injustice, to undo the thongs of the yoke, to let the oppressed go free, to share our bread with the hungry, to bring the homeless poor into our houses, to cover the naked, and not to hide ourselves from our own kin. Break forth the light of dawn to dispel our darkness when we disobey You and let the glory of the Lord shine through when we do. For then when we cry for help You shall answer and say, "Here I am." Amen.**

\* **Assurance of Forgiveness**

\* **Gloria Patri**

**Glory be to the Father, and to the Son, and to the Holy Ghost; As it was in the beginning, is now, and ever shall be, world without end. Amen. Amen.**

---

**WE HEAR GOD'S WORD PROCLAIMED**

---

**Tell Us Our Story**

Phil Brown

Children are always welcome to stay in worship. However, parents may take your child(ren) to the nursery. Parents of children in pre-k, kindergarten, and first grade may take them to the Faithful Friends Class in Room 121.

**Old Testament Reading**

Isaiah 43:1-4a

Paula Morris

Leader: The Word of the Lord.

**People: Thanks be to God.**

**New Testament Reading**

Matthew 5:13-16

Leader: The Word of the Lord.

**People: Thanks be to God.**

**Sermon**

Called By Name

Jason Whitener

\* **Apostles' Creed**

Shannon Dill

**I believe in God, the Father Almighty, Maker of heaven and earth, and in Jesus Christ, His only Son our Lord; Who was conceived by the Holy Ghost, born of the Virgin Mary, suffered under Pontius Pilate; was crucified, dead, and buried; He descended into hell; the third day He rose again from the dead; He ascended into heaven, and sitteth on the right hand of God the Father Almighty; from thence He shall come to judge the quick and the dead. I believe in the Holy Ghost; the holy catholic church; the communion of saints; the forgiveness of sins; the resurrection of the body; and the life everlasting. Amen.**

**Offering & Offertory**

If Ye Love Me / Phillip Wilby

Chancel Choir

If ye love Me, keep My commandments, and I will pray the Father, and He shall give you another Comforter, that He may abide with you forever. E'en the Spirit of Truth. And ye know Him, for He dwelleth with you and shall be in you. I will not leave you comfortless. I will come to you.

*(John 14:15-18)*

\* **Doxology**

**Praise God, from Whom all blessings flow; Praise Him, all creatures here below; Praise Him above ye heavenly host; Praise Father, Son and Holy Ghost. Amen.**

## The Lord's Supper

When coming forward for Communion, please kneel at the closest available space to the center aisle. If you would like to be served where you are sitting, please raise your hand as the communion servers come down the center aisle and you will be served by intinction (dipping the bread in the cup). Everyone is invited to participate in the sacrament. Children who have discussed the sacrament with their parents and/or a pastor are welcome. A server with gluten-free bread will be standing at the center aisle. If you prefer gluten-free bread, please indicate your preference as you approach. Parents, please note the center rings of the communion are filled with wine. Only the outer ring is filled with grape juice.

## Communion Music

The Holy Meal / Wayne Wold

Westminster Choir

What does it look like – the Holy Meal? People believing Christ, gladly receiving Christ. Praise God! It looks like love! What does it sound like? Words are inviting us, songs are uniting us. What does it taste like? Christ comes to dine with us, shares bread and wine with us. What does it feel like? Deep joy and peacefulness, high praise and thankfulness.

A Hymn to Life / O WALY WALY

Chancel Choir

A hymn to God, Who strong, yet meek, unfurls the stars, enfolds the weak, Who asks our best, but loved us first, and loves us still, despite our worst. A hymn to Christ, Whose worker's hand carved life from death, forged rock from sand, from Whose full heart rich mercies flow, each gift received, a gift we owe. A hymn to church, our waking place to early calls and signs of grace, where soaring hearts learn thoughtful ways, and searching minds are led to praise. The Spirit's hymn, God's song between what mortals chant, what angels sing, it lifts our hearts in common bond with saints still here and saints beyond. A hymn to love, a song to life, a family's care in peace and strife. No sweeter gift, save God alone, than those whom life has named our own. A hymn to friends, life's long surprise of opened doors and widened eyes. 'Round laughing fires of wit and art, we dance a while, then weep to part. Let thankful souls, then, go in peace, run swiftly to a higher feast; God's joy for wine, God's light for bread. Feast long our hearts at table spread.

*(Robert Stamps)*

## Morning Prayer & The Lord's Prayer

**Our Father Who art in heaven, hallowed be Thy name. Thy kingdom come, Thy will be done, on earth as it is in heaven. Give us this day our daily bread; and forgive us our debts, as we forgive our debtors; and lead us not into temptation, but deliver us from evil. For Thine is the kingdom and the power and the glory, forever. Amen.**

- \* **Sending Hymn #403**                      What a Friend We Have in Jesus
  
- \* **Benediction**
  
- \* **Postlude**                                  Temples Eternal

**WORSHIP NOTE:** Today's organ selections are adaptations for organ by G. Winston Cassler of choral pieces composed by F. Melius Christiansen. Christiansen was one of the most well-known conductors of the St. Olaf College Choir.

**Congregational Meeting TODAY**

The Session of St. Luke's has called a congregational meeting following the 11 a.m. worship service of February 9, 2014. The purpose of the meeting is to approve a new charter for the Endowment Committee, elect new officers to the Class of 2017, report the 2013 financial results and the 2014 budget, and approve the terms of call of ordained staff.

Faye Cashwell, Clerk of Session

---

## KNOW

---

**FEAST for ALL!** Register now for our Wed. night fellowship and learning program. More details are in the brochures in the lobby, narthex, Sheppard Hall lobby and on our website. You can sign up for dinner weekly on the blue pew cards, or call Sally Hawkins in the church office by noon on Mon.

**Men's Bible Study:** Start your morning with fellowship and Bible study (I Samuel). Join Dave Elkins and other men **every Fri.** from 6:40-8 a.m. in the Parlor.

### Adult Sunday School ~ 9:30-10:30 a.m.

---

**Contact:** Shannon Dill, shannondill@slpres.org; 770-393-1424 ext. 229.

**Faith Foundations**, Rm 232: We are studying the Gospel of Matthew with emphasis on the Church as an earthly manifestation of the kingdom of God.

**FINCH** (Families in Christ), Rm 203: What does it mean to keep the Sabbath in our world today? Join us for an interesting discussion.

**The Story of the Bible**, Rm 145, Parlor: Each Sunday includes a 30 min DVD lecture by Dr. Luke Timothy Johnson, followed by a class discussion.

**Seasons of the Spirit**, Rm 231-233: A biblically-based discussion class following the revised common Lectionary.

**Soul Food, Finding Sustenance for Faithful Living**, Rm 235: Fellowship, study and discussion on a range of topics related to spirituality in our lives. The "Thoughtful Christian" curriculum provides the source material for this class.

### Youth Connection (SLYC)

---

**SLYC Contact:** Phil Brown, philbrown@slpres.org; 770-393-1424 ext. 238.

**Youth Sunday School:** Sundays, 9:30-10:30 a.m. in the Youth rooms.

**Youth Connect:** Sundays, 5-7 p.m.

### From the Choir Loft

---

**Chastain @ St. Luke's** Our annual outdoor church and community event is scheduled for Sun., Apr. 27 at 6 pm. Once again, we invite our talented church members to participate! If you have an idea or song suggestion, please contact Clair at the church office. **We need to know your ideas and suggestions by February 16** so we can put the program together and have time to rehearse. We look forward to hearing from you! **Contact:** Clair Maxwell (clairmaxwell@slpres.org or 770-393-1424 ext. 227).

**Open Choir Sundays** Once again, the choir loft is open to anyone who would like to sing with the Chancel Choir on the following Sundays:

Feb. 16 Just a Closer Walk with Thee

Mar. 2 And the Glory of the Lord *from the Messiah*

Join us for warm-ups on those mornings at 10:30 a.m. in the choir room.

### Wednesday Rehearsals:

**Chancel Choir** 7:30-9:00 p.m. *adults*

**Festival Ringers** 6:15-7:15 p.m. *youth & adults*

**Westminster**

**Choir** 5:00-5:45 p.m. *2nd-5th grades*

**Cherub Choir** 5:15-5:45 p.m. *4 years -1st grade*

**Youth Choir** rehearses on **Sundays**, 7:00-8:00 p.m.

*6th-12th grades*



**News from SPLASH! Children's Ministries**

---

We need volunteer teachers for **Faithful Friends**, our worship education class for PreK, K and first graders. Contact Catherine Anne Thomas: [cathomas@slpres.org](mailto:cathomas@slpres.org), 770-393-1424 ext. 228.

**Touch the Water, Taste the Bread!**

Children ages three through third grade are invited to join us for our upcoming Baptism and Communion workshops. These will take place on Sundays after *Tell Us Our Story* on the following dates:

- February 23 (Baptism 1)                      March 9 (Communion 1)
- March 2 (Baptism 2)                         March 16 (Communion 2)

Pick ONE Baptism date and ONE Communion date, as we offer two sessions of the same workshop to be sure all children can be included. On the day of your workshops, please bring your child to the chapel at the appropriate time. Parents are welcome to join the experience, or they may return to worship and pick up their child in the Great Hall at noon. Questions? Contact [cathomas@slpres.org](mailto:cathomas@slpres.org).

**St. Luke's Presbyterian Women (SLPW)**

---

**SLPW Contact:** Ellen Womack, Moderator, [epwomack@bellsouth.net](mailto:epwomack@bellsouth.net); 770-913-0314.

**FEBRUARY, 2014**

**Circle item:** Snack foods, candy, other treats, and money for postage for Valentine Boxes

**Book Study:** "Namesake: When God Rewrites Your Story" by Jessica LaGrone

**Lesson:** "Be Set Apart for God" (Daniel)

**SCHEDULE**

(All Circle meetings are held in the Parlor, Rm. 145)

Feb. 10 Monday	9:30 a.m.	Circle 1
Feb. 10 Monday	7:30 p.m.	Night Circle
Feb. 11 Tuesday	9:30 a.m.	Circle 2

**Wednesday Morning Moms Group** Spiritual Parenting: it's not about perfect behavior, it's about vibrant faith! Join us Wednesdays through April 2 from 10-11 a.m., as we share, laugh, and grow together. Preschool-age childcare is available by reservation. Contact Shannon Dill for more information.

**8th Annual Women's Retreat ~ Registration Extended!** With all the wonderful events over the past several weeks keeping everyone busy, we are extending the registration deadline. Don't miss this opportunity to join other women from St. Luke's for our Annual Retreat: "Reflecting the Beauty of the Lord." We begin on Fri. evening, March 14th, and end Sun. morning, March 16th, with worship and communion service. The cost for the weekend is \$230. Details and registration forms are available in the lobby. Contact Debi Elkins (678-640-0808 or [debi.elkins@att.net](mailto:debi.elkins@att.net)) if you have any questions.

---

## SERVE

---

**Helping Hands:** This ministry matches short term or emergent needs in the congregation with available resources. Could you use your time and talent to assist someone in the congregation? Examples are setting up or assisting with a computer, driving a member to an appointment, helping change light bulbs. If this interests you, contact Billy Martin, [billybeer214@yahoo.com](mailto:billybeer214@yahoo.com) or 770-441-0373. If you need the Helping Hands team, contact your Deacon.

**Buy Some, Share One:** Support food pantries at local organizations by buying an extra non-perishable item every time you go to the grocery store, and placing your donation in the carts in the main lobby. This month we are collecting for the IOH (Interfaith Outreach Home). Thank you!

**Volunteers Needed to Provide Dinner:** Interfaith Outreach Home (IOH) provides transitional housing for homeless families; St. Luke's provides and delivers a meal on the third Thursday of each month. Reimbursement is budgeted. If your family or group can provide and serve a meal, please put your name on the sign-up sheet on the lobby bulletin board or contact Al Bridges at 770-394-6581. **Volunteers needed for May 15, 2014.**

**Serve your church with your smile!** There is a need for those willing to serve as ushers or greeters:

Greeters greet members and guests as they come in through the lobby and narthex. (This is a great thing to do as a family!) Sign up to be a greeter at <http://bit.ly/slpcgreet2>

Ushers greet everyone, pass out bulletins, take up the offering, direct congregants during communion, and tidy up after worship.

Questions? Contact John Tienken, 770-394-1104, [tienkenj@gmail.com](mailto:tienkenj@gmail.com).

**Looking for a great way to serve your church family?** St. Luke's Meal Ministry provides meals for families or individuals who are recovering from a recent surgery or illness, suffering from the loss of a loved one, or celebrating the birth or adoption of a new baby. If you are interested in delivering a meal to a congregation member or would like more information, please contact Krissy Williams at [bkcook71@yahoo.com](mailto:bkcook71@yahoo.com).

**Get together for breakfast** here at St. Luke's every Sunday morning and welcome folks as they arrive. If you and your friends could furnish a continental breakfast, we will be glad to reimburse you. Please sign up on <http://bit.ly/slpcbrkfst> or contact Jay Burton, [jburton@mflaw.com](mailto:jburton@mflaw.com).

**Mission Trip to spectacular Guatemala:** Have you ever rescued a family from lung disease and from hunger? Would you enjoy building a brick stove or planting trees in cool mountain air, with volcanoes in the background? For anyone over 18, we are planning a mission team from St. Luke's to work with long-time Mission partner, AIR-Guatemala for this summer (2014). We hope to have a SLPC group MAY 31 - JUNE 7, but individuals are welcome any Saturday - Saturday, from May 25th - July 6th. For more info: Anne Hallum at [ahallum@stetson.edu](mailto:ahallum@stetson.edu). AIR staff members will meet you at the airport and handle every detail of an unforgettable week!

**Share a Dinner:** St. Luke's provides dinner on the fourth Sunday of the month for 26 homeless men at Journey Night Shelter (formerly Druid Hills). Please sign up on the lobby bulletin board or call Al Bridges at 770-394-6581. **Volunteers are still needed for April 27, May 25, June 27, and July 27.**

---

## SHARE

---

**Better Marriages Getaway Weekend** is **Feb. 14-16**, at the Sea Palms Resort in St. Simons Island, GA. \$255 per couple plus hotel room (\$129 per night). Register at [www.BetterMarriagesGA.org](http://www.BetterMarriagesGA.org) or contact Kimey and Mark Reed at [kimeyreed@gmail.com](mailto:kimeyreed@gmail.com) or 404-441-8614.

**Marriage Enrichment Group** Meets monthly, 5 - 6:30 p.m., Finch Room (203). Childcare available 4:45 - 6:30 p.m. Spring schedule: Mar. 23, Apr. 13, May 18. Questions? Contact Kimey and Mark Reed at [kimeyreed@gmail.com](mailto:kimeyreed@gmail.com) or 404-441-8614.

**Faith & Film** **Fri., Feb. 21**  
Sheppard Hall 207 (Senior High Room)

**7:00 p.m., Potluck dinner** RSVP to Nick and Connie Nicholson at [connie@salesfitness.com](mailto:connie@salesfitness.com) to let them know you are coming. Bring a friend!

**7:45 p.m., Movie: Music of the Heart** A 1991 film based on the true story of a violin teacher who created a high school music program more or less out of thin air in East Harlem, and eventually found herself and her students on the stage of Carnegie Hall.

**Curious about Tai Chi?** It's lots of fun and great for improving muscle strength, flexibility and balance. Join Sam Evans and friends Tues. or Thurs. at 12:30.

### **How are those New Year's Resolutions going?**

If you decided to seek assistance for help dealing with stress or difficulties in your life, we are waiting to hear from you! St. Luke's Stephen Ministers are available to meet with you at your convenience to offer a listening ear. Please contact Stephen Leaders Shannon Dill or Laura Strange for a referral.

**2014 Flowers:** To give flowers in memory or in honor of someone or for a special event, sign up now! Cost is \$80. The calendar is on the main lobby bulletin board. Questions? Call Celeste Fischer, 404-434-8099 or Faye Cashwell, 770-409-1960.

**The joyful way to get fit!** Christian Music Zumba meets here Thursdays, 8-9 p.m. \$6 per class or 5 classes for \$25. For more info, contact Chris Wallace: [clw7324@comcast.net](mailto:clw7324@comcast.net) or 770-395-7324 or 404-432-0090.

**February OWLS** (Older, Wiser, Loving Seniors) Join us for lunch and trivia on Tues., Feb. 25 at 11:30 a.m. Lunch is \$6 per plate, and trivia will be lead by Ron Valdes, one of our members. Please RSVP on the sign-up sheet on the lobby bulletin board.

**Valentine care packages** will go out on Tues. (the 11th), to around 75 of our college students, military and homebound members! PW could really use your help:

- **POSTAGE** Each box costs approximately \$5 to mail, so we appreciate any donations to offset the cost. Please look for the envelope in the Parlor anytime this week.
- **TREATS** (candy, snack bars, hot cocoa packets, etc.) by tomorrow (10th) in the Parlor.
- **HOMEMADE** goodies (individually wrapped), to the Session room tomorrow or Tues. (11th) morning by 10 a.m. Thank you!

Any questions, please contact: Randi Wesley 404-313-6021/ [rrwesley@att.net](mailto:rrwesley@att.net)

---

## LAST SUNDAY

---

**Tithes & Offerings**..... \$21,625

**8:30 attendance**..... 72

**11:00 attendance**..... 605

**Nursery** ..... 22

Financial reports available online.

Each Sunday, many of our pews will have first-time or repeat visitors. Your warm welcome to our guests expresses the inviting and hospitable character of this congregation. Your smile and welcoming word make a difference.

---

## CHURCH STAFF

---

<b>Pastor</b>	Dr. Jason Whitener
<b>Associate Pastor</b>	Rev. Shannon Dill
<b>Associate Pastor</b>	Rev. Phil Brown
<b>Pastor Emeritus</b>	Dr. E. Moss Robertson
<b>Dir. of Music &amp; Organist</b>	Clair Maxwell
<b>Dir. of Children's Ministries</b>	Catherine Anne Thomas
<b>Dir. of St. Luke's Little Saints</b>	
<b>Preschool &amp; Kindergarten</b>	Carol Perry
<b>Dir. of Communications</b>	Tina Knoedler
<b>Administrative Assistants</b>	Liz Catlett & Bonnie Farrar
<b>Receptionist</b>	Sally Hawkins
<b>Facilities Manager</b>	Roby Price
<b>Treasurer</b>	Gary Phipps

---

## PASTORAL COUNSELING

---

### **St. Luke's Perimeter Counseling Center**

Georgia C. Griffin, J.D., M. Div., Director

Perimeter Center, Licensed Marriage & Family Therapist/Mediator

404-636-1457, ext. 452    [www.cccgeorgia.org](http://www.cccgeorgia.org)



**ST. LUKE'S**

PRESBYTERIAN CHURCH (USA)

1978 Mount Vernon Road  
Dunwoody, Georgia 30338

---

## ELDERS

---

### **Class of 2014:**

Tricia Bridges, Jim Bryant,  
Faye Cashwell (Clerk of Session),  
Parker Cutler (Youth Elder),  
Annie Hardy, Sally Joyce,  
David King, Dick Miller, John Ray

### **Class of 2015:**

Jennie Burroughs, Jared Elliot,  
Tricia Igleheart, Fern Mitropoulos,  
Mark Reed, Chris Wiseman,  
Chris Wallace, Les Woodside

### **Class of 2016:**

Rich Crutchfield, Mary Guerrant,  
Tom Loftis, David McKenney,  
Wayne Radloff, Mark Ryan,  
David Tharp, Allison Thornton

---

## DEACONS

---

### **Class of 2014:**

Diane Beidl, Jay Burton,  
Jim Giesler (Moderator),  
Joyce Johnson, Jean Kammerer,  
Paula Morris, Luis Sepulveda,  
Carol Sweigert, Kris Turnbull

### **Class of 2015:**

Maria Barnhart, Matt Biggerstaff,  
Sarah Caverhill, Peter Keohane,  
Julie Knotts, Billy Martin,  
Gena Spears, Taylor Vivian,  
Kris Williams

### **Class of 2016:**

Sandra Clay, Amanda Dunnick,  
Shawn Hamlin, Niki Rabren,  
Katherine Robeson,  
Rebecca Strickland, Jenny Troha,  
Michelle Vail, Meg Wallace